



11, rue Chrestias  
31770 Colomiers  
FRANCE  
Tel/Fax: + 33 (0)5 61 49 96 92  
[compagnie@cie-cavecanem.com](mailto:compagnie@cie-cavecanem.com)

TECHNIC  
Séverine Combes - Technical Manager  
+33 (0) 6 62 28 57 61  
[sev.combes@wanadoo.fr](mailto:sev.combes@wanadoo.fr)

## DROMOS

### Technical Rider

Duration of the performance : 30 mn

### STAGE

Minimum opening from the proscenium : 6m  
Minimum opening from wall to wall : 9m  
Minimum Depth : 8m  
Height to the proscenium : 6m

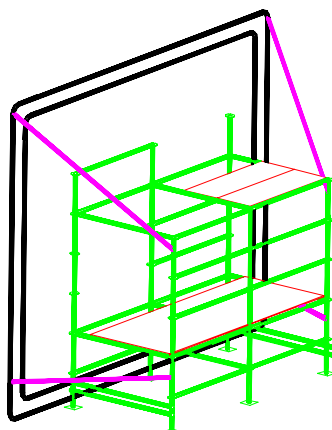
*Don't hesitate to contact us if there is any dimension problem, adaptations are possible.*

#### To be provided by the venue

Front curtain  
Wings  
1 backdrop  
Black floor around our scenographie.

#### Provided by the company

1 scaffolding (ULMA) : Ht: 3m / Prof.: 1,50m / L.: 3m  
Aluminium portal for the screen fixed on the scaffolding (Ht: 4m / L: 5m)  
1 Screen



## VIDEO

### To be provided by the venue

A video projector (**power 2800 to 3000 lumens**) + appropriate optical to the projection size (Base 4m x H.3m)

1 DVD player

Planning the appropriate connecting wiring between the video projector, the DVD player and the sound console, and also an amplifier of video signal to avoid signal loss on big length of cable.

## LIGHTING

1 memory lighting

Channels: 24 of 2Kw

PC 1 KW	2
Profile spots 1Kw type R. Juliat 613SX (28°/54°)	6
Profile spots 1Kw type R. Juliat 614SX (16°/43°)	21
BT 250W	1
Side Booms	2

1 Lighting tower

All spotlights must be equipped with colour frame and safety chains

## SOUND

1	Console 8/2/2 +2
1	Sound Stéréo on stage
1	Diffusion : Quadriphonic in auditorium (Type MTD 112, 115)
1	Amplifier with filter and processor
2	CD player auto cue

*It is important to install the control sound in the house if the control room does not have a good listening quality.*

1 intercom system between sound-light-stage

## PLANNING

The company travels with its own lighting and stage crew.

### MOUNTING

### SETTINGS

### REHEARSALS

**Crew requested for good conditions of work** (according to the place)

<i>Lights</i>	1 Light engineer (mounting, focus, recording, performing)
	2 electricians (mounting, focus)
<i>Sound / Vidéo</i>	1 Sound / video manager
<i>Stage</i>	1 Stage manager
	1 stagehand (setting, stage preparation, dismantling)
	1 cintrier

### **Working time :**

Mounting + Light-hanging	1+1/2 call (4 hours each call)
+ Focus	
Light recording / storing + sound settings	1/2 call
Rehearsals + stage preparation	1/2 call

## **DRESSING ROOMS**

Dressing rooms with shower and mirrors for 1 dancer + 3 crew members.  
Please provide bottles of water as soon as the company arrives.




**Please provide 1 rehearsal room for the dancers the day of the show, since 14h00.**

**In any case, to make the setting up and the adaptation easier, please send to the Company a technical description and a detailed plan of the room and stage, including hanging devices as soon as possible.**

Thanks to send plans at the .dwg (AUTOCAD 2000) format to Séverine Combes. We can adapt this technical requirements form to your venue. Do not hesitate to contact us.  
As part of the agreement, a copy of this technical form must be signed and returned to us.

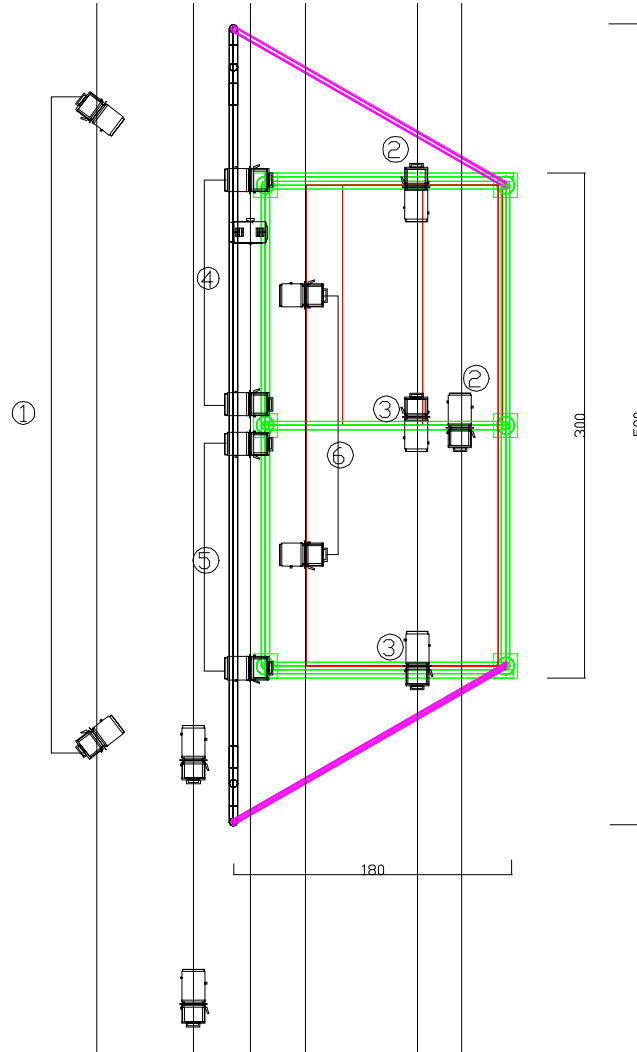
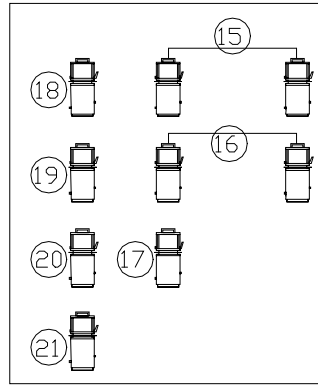
Read and approved,  
Technical Manager

Légende

- 24 x  Déc 1Kw 614S
- 8 x  Déc 1Kw 613SX
- 1 x  BT 250W

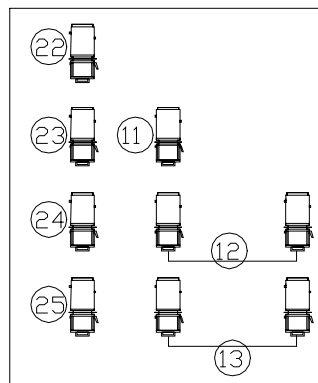
BAS  
sur échelles  
en coulisses

HAUT



HAUT  
sur échelles  
en coulisses

BAS



Cie CAVE CANEM  
"DROMOS"  
Plan lumière standard  
Ss ech.